



AIMING TO “SLOW THE FLOW”

Steve Kirk – Chairman

Anthony Wykes – Vice Chair and Treasurer



Group also includes:

Diane Bromfield - Deputy Treasurer

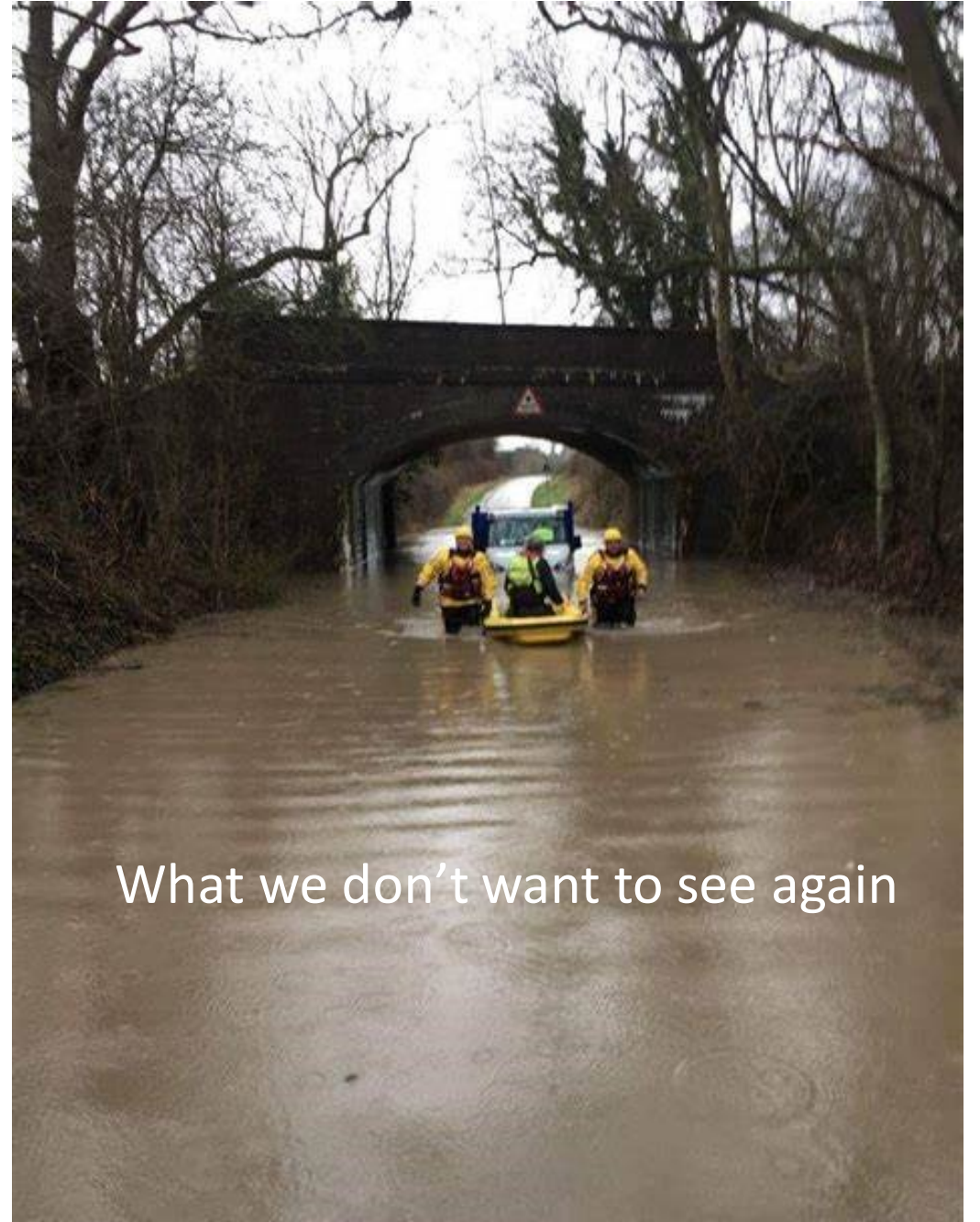
Steve England

Bob Waight

Jo Harper

Cllr. Mark Keogh-Bywater

David Johnston



What we don't want to see again



WWFAG background

- Founded in 2018 under National Flood Forum structure
- Voluntary organisation with aim of “Slowing the Flow” of Brook and River which have flooded Wellesbourne in 1968, 1998, 2007 with a “very near miss” in November 2019
- Partners include WCC-Flood Risk Management, Environment Agency, Severn Trent Water, W&W Parish Council, Warwickshire Wildlife Trust, Severn Rivers Trust, meeting and acting as a Multi Agency Group



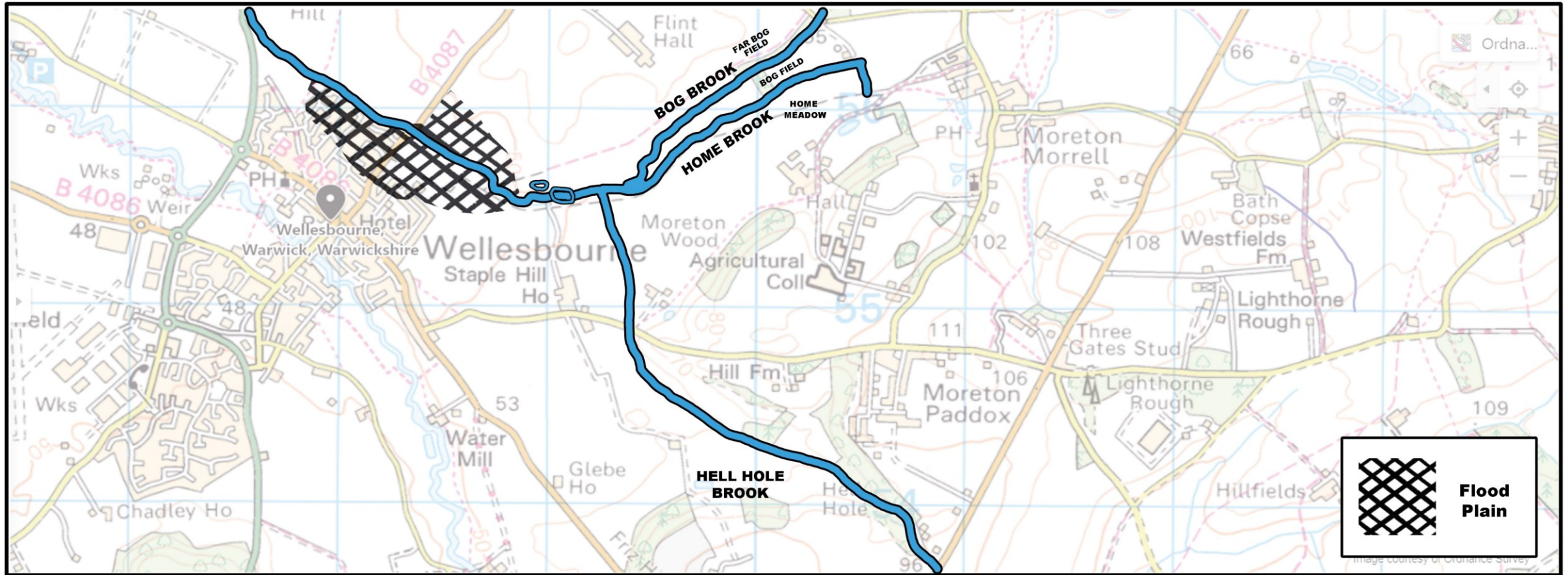
WWFAG background

- Commissioned a Hydrological Survey of Catchment Area in 2019/20 with grant from WCC FRM/W&W PC
- Completion, analyses and actions from Survey slowed by Covid in 2020/21, but conclusion was to use “Slow the Flow” techniques in upstream areas
- Positive meeting with Warwickshire College Group in 2021 led to development of Stage 1 Action Plan with Moreton Morrell College

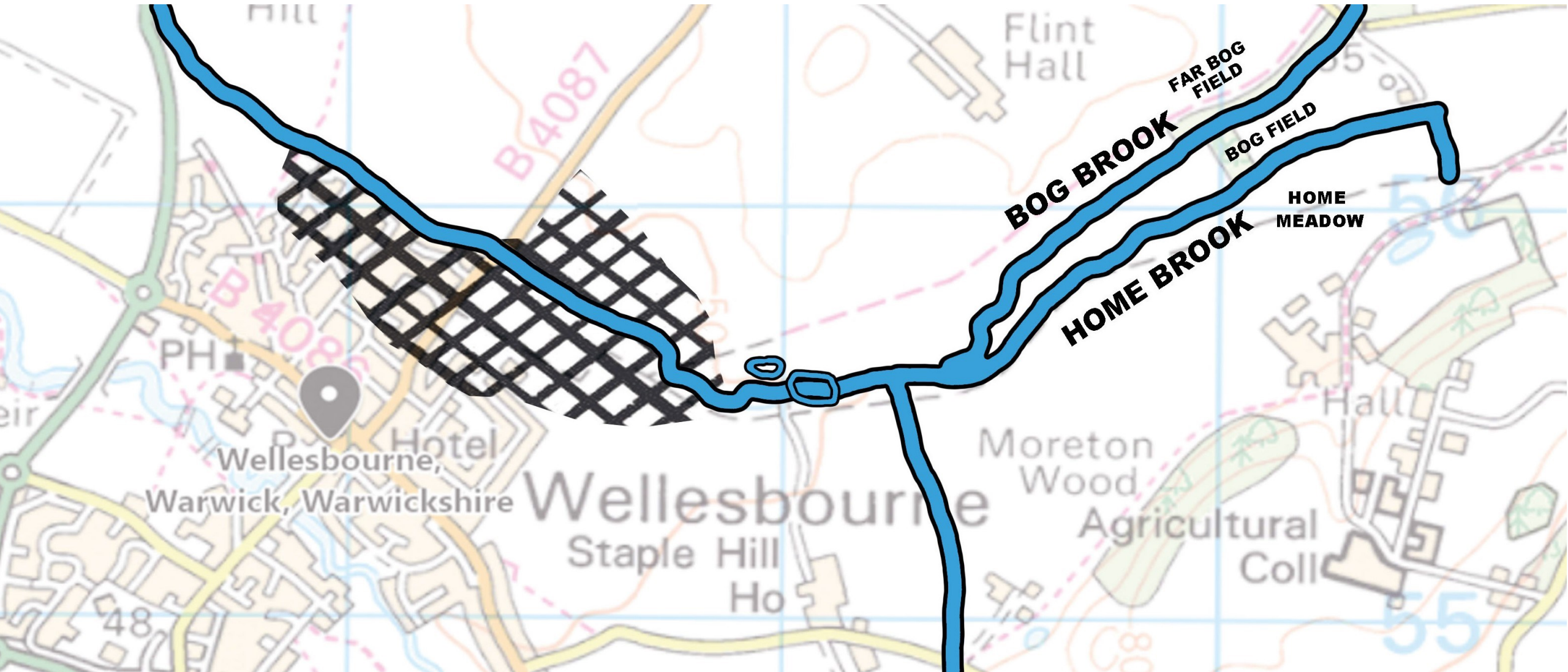
Rationale for Stage 1 Plan

- A brook passes along the Northern edge of Wellesbourne, which overtops its banks during severe storm events and floods 60 – 80 houses and flats
- This brook is unnamed on the Ordnance Survey map, but is variously called the Newbold Brook (by locals) or Charlecote Brook (by Severn Trent Water)
- Three tributary brooks feed into Newbold Brook, one of which passes between two fields at the Moreton Morrell Agricultural College farm, called informally Bog Field and Far Bog Field, as they are both frequently very waterlogged, especially in autumn and winter
- Hence the Stage 1 target brook is now referred to informally as Bog Brook, the other two being Home Brook and Hell Hole Brook (see next map)

The Problem



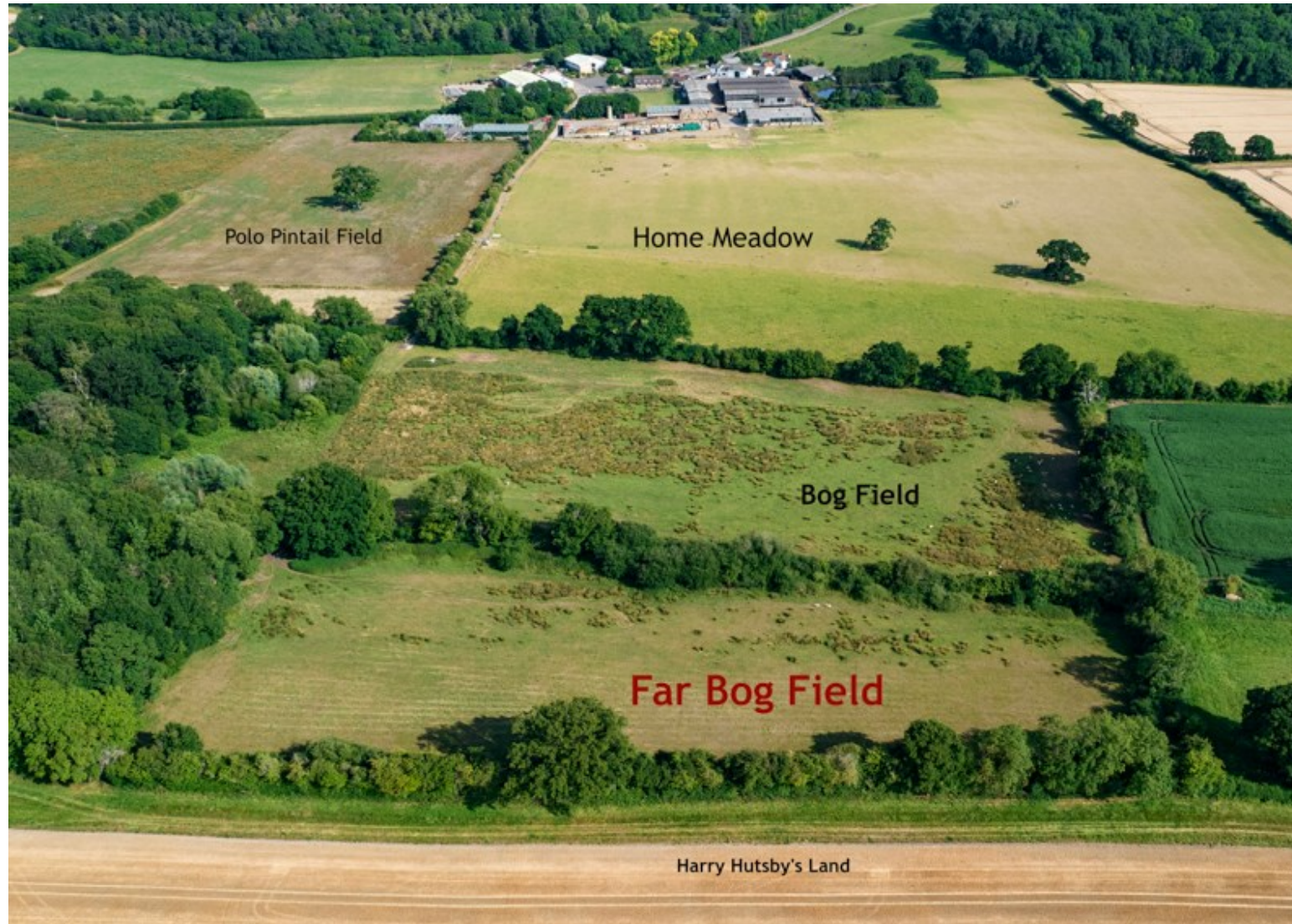
The Problem – closer to home!



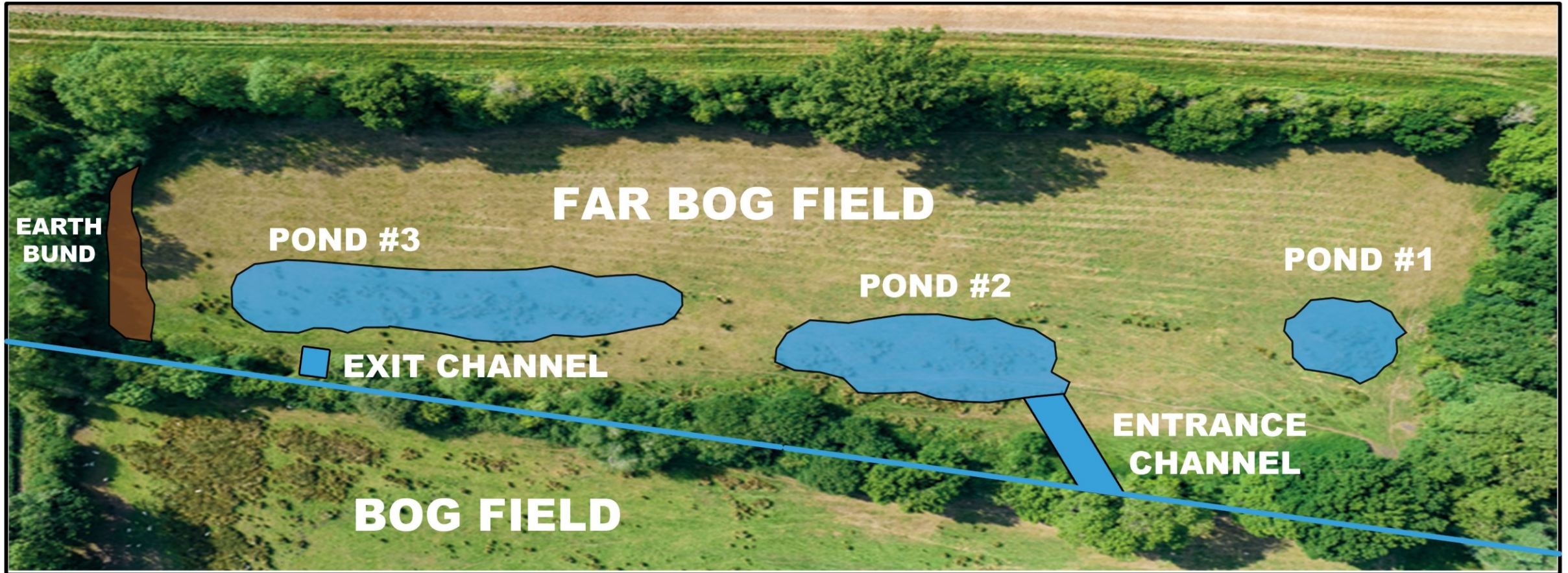
Stage 1 Plan and Benefits

- We proposed to convert Far Bog Field into a partial wetland by opening up the Northern bank of Bog Brook to allow it to flood at periods of intense rainfall and to slowly drain out again afterwards
- By creating an online attenuation area in the form of the wetland, peak flow of floodwaters downstream will be reduced, thereby reducing the risk of flooding to houses on the Northern side of Wellesbourne in Mountford Close, Newbold Road, Mordaunt Road, St Peters Road and Hastings Road
- Converting the field from a waterlogged and compacted pasture, with large areas of rushes, into an established and diverse wetland will have a hugely beneficial effect on the local biodiversity, as a result of the increased variety of habitat suitable for shelter and forage

Project location at Moreton Farm



The Project



Consents, Approvals and Timing



- Henry Dingle, the Manager of the College Farm, approved the change in use of the field, on behalf of Moreton Morrell College/WCG
- Full Consent Application was given in early September by WCC-FRM Team who had been very supportive and offered their expertise to WWFAG, in conjunction with EA and Severn Rivers Trust Environmental experts
- Work was completed by end September 2022, using MMC-approved contractor and volunteer groups
- Final work to install 2 “Leaky Dams” is now ready for action by WWFAG

During the excavation process in September



Aerial view of completed work



Pond 3 early March 2023



Our next projects



- Home Brook at Moreton Morrell Farm
- Hell Hole – a natural site for “Leaky Dams” and Volunteers!



- River Dene – early plans in place to start discussions with local farmers, upstream from Walton Hall
- We also need to consider run-off from Edge Hill and Avon Dassett areas
- All projects subject to Consent and Funding being in place

A massive thanks to WWPC



- We could not have gone as far as we have without the interest and financial support from our Parish Council in the form of Grants
- We very much appreciate the confirmation of our 2023 Grant which will go towards Home Brook project at Moreton Farm
- We are always looking for a representative from Walton to join our group
- Local volunteers will always be welcome for our “Action Days”
- See our Facebook page “wellesbourneandwaltonfloodactiongroup”
- **Any questions??**